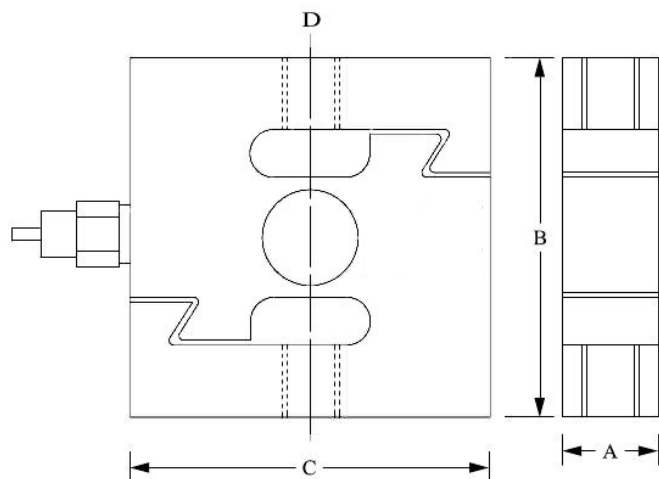


KPA6110P Series S type load cells

Built in overload stops

Features

- Capacities 0-100kg to 0-20T
- Alloy tool steel construction
- IP67 rating
- Simple installation
- Tension and compression operation
- Weighing or force measurement applications



Range	A	B	C	D Thread
100kg	19	80	70	1/2" - 20UNF 2B
250kg	19	80	70	1/2" - 20UNF 2B
300kg	19	80	70	1/2" - 20UNF 2B
500kg	19	80	70	1/2" - 20UNF 2B
750kg	25	80	70	1/2" - 20UNF 2B
1t	25	80	70	1/2" - 20UNF 2B
1.5t	25	80	70	1/2" - 20UNF 2B
2t	25	108	95	3/4" - 16UNF 2B
5t	25	108	95	3/4" - 16UNF 2B
10t	51	178	130	1 1/4" - 12UNF 2B
20t	60	190	160	1 1/2" - 12UNF 2B

Specifications

Capacities	0-100kg to 0-20T
Nominal output at capacity	3mV/V \pm 0.1%
Non linearity	<0.03% FSO
Hysteresis	<0.03% FSO
Non repeatability	<0.02% FSO
Creep (30 mins)	<0.03% capacity
Temp effect span	15PPM per °C of applied load
Temp effect zero	26PPM per °C of applied load
Compensated temp. range	-10°C to +40°C
Operating temp. range	-40°C to +65°C
Safe load	150% of capacity
Mechanical failure	300% of capacity
Recommended excitation	10V - 15V AC/DC
Input resistance	385 Ω \pm 15 Ω
Output resistance	350 Ω \pm 3 Ω
Environmental protection	IP67
Cable length	6 metres

Wiring Specifications

RED	+ Excitation
BLACK	- Excitation
GREEN	+ Signal
WHITE	- Signal

Order Code

SG-KPA6110P-100	Range 0-100kg
SG-KPA6110P-250	Range 0-250kg
SG-KPA6110P-300	Range 0-300kg
SG-KPA6110P-500	Range 0-500kg
SG-KPA6110P-750	Range 0-750kg
SG-KPA6110P-1T	Range 0-1T (1,000kg)
SG-KPA6110P-1.5T	Range 0-1.5T (1,500kg)
SG-KPA6110P-2T	Range 0-2T (2,000kg)
SG-KPA6110P-2.5T	Range 0-2.5T (2,500kg)
SG-KPA6110P-5T	Range 0-5T (5,000kg)
SG-KPA6110P-10T	Range 0-10T (10,000kg)
SG-KPA6110P-20T	Range 0-20T (20,000kg)

SG-KPA6110P-1.0-0

AMALGAMATED INSTRUMENT CO

ABN: 80 619 963 692

Unit 5, 28 Leighton Place Hornsby
NSW 2077 Australia

Telephone: +61 2 9476 2244
Facsimile: +61 2 9476 2902

e-mail: sales@aicpl.com.au
Internet: www.aicpl.com.au