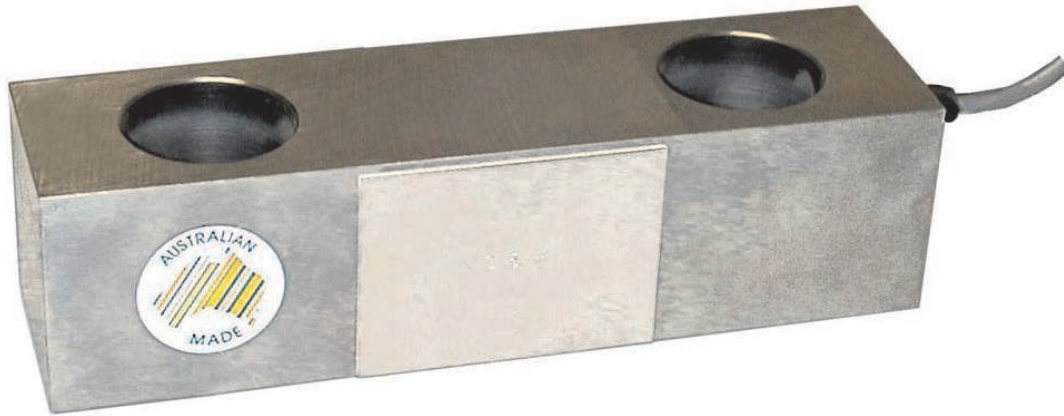


Kelba 'K' Series Load Cells Tension Models



Description

Kelba 'K' series tension load cells exhibit proven dependable performance over a wide range of weighing applications. The load cells are machined from specially selected tool steel and then heat treated to a precise toughness. Electroless nickel plating is then applied. Particular attention is paid to the environmental sealing in order to provide a product with good field performance and reliability. All 'K' series cells are IP67 rated. The output from each model is standardised.

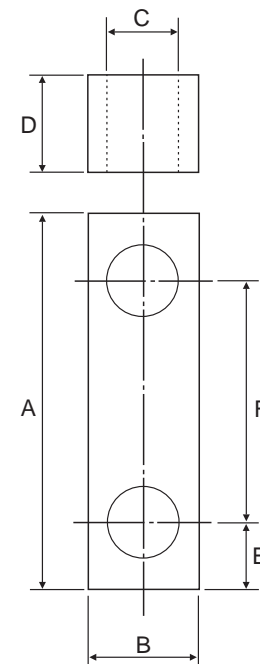
Specifications	Model SG-KT-N-6000KG	Model SG-KT-N-12000KG
Load cell type	Tension force	Tension force
Material of construction	Tool steel	Tool steel
Mounting bolt size	Green shackle pin	Green shackle pin
Recommended torque	n/a	n/a
Load hole	Green shackle pin	Green shackle pin
Load fitting contact area	n/a	n/a
Rated capacity (R.C.)	6000 kg	12000 kg
Safe load limit	150% of R.C.	150% of R.C.
Max. excitation voltage	10 VDC	10 VDC
Rec. excitation voltage	10 VDC	10 VDC
Output at rated capacity	1.0mV/V \pm 0.5%	1.5mV/V \pm 0.5%
Standard cable length	5 metres	5 metres
Temperature range	-10 to + 50°C	-10 to + 50°C
Input resistance	385 Ω (nominal)	385 Ω (nominal)
Output resistance	350 Ω \pm 0.2%	350 Ω \pm 0.2%
Non - linearity	<0.5% of rated cap.	<0.5% of rated cap.
Hysteresis	<0.5% of rated cap.	<0.5% of rated cap.
Non- repeatability	<0.1% of rated cap.	<0.1% of rated cap.
Creep (after 30 min)	<0.1% of reading	<0.1% of reading
Span/temperature effect	0.0015% of reading per degree C	0.0015% of reading per degree C
Environmental protection	IP67	IP67
Weight	1.2 kg	2.9 kg

Installation

Electrical connections:

Excitation: Red wire +V, Black wire -VE
Signal: Green wire +VE, White wire -VE
Shield: Bare wire

Tension force type dimensions (mm)						
Model	A	B	C	D	E	F
SG-KT-N-6000KG	124	42	27 ϕ	36	23.5	77
SG-KT-N-12000KG	193	51	36 ϕ	51	38	117



LOADKELT-2.0-0

AMALGAMATED INSTRUMENT CO PTY LTD

ACN: 001 589 439

Unit 5, 28 Leighton Place Hornsby
NSW 2077 AUSTRALIA

Telephone: +61 2 9476 2244
Facsimile: +61 2 9476 2902

e-mail: sales@aicpl.com.au
Internet: www.aicpl.com.au