

Rope Clamp Load Cell - Model SG-PA6170

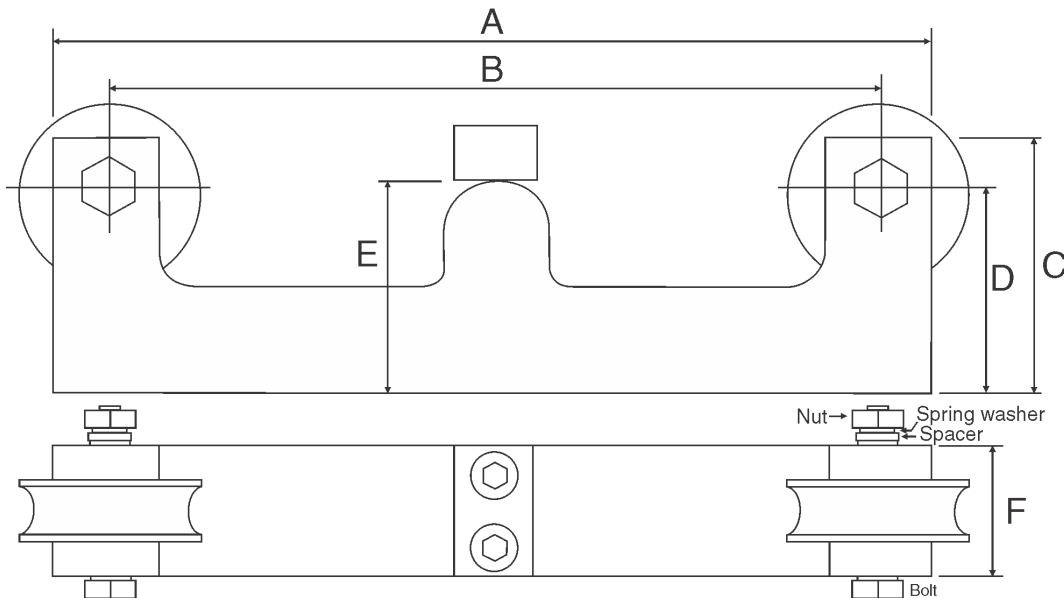


Specifications

Nominal output:	2mV/V \pm 0.1%
Zero balance:	\pm 1% of full scale
Linearity error:	0.03% FSO
Hysteresis:	0.03% FSO
Repeatability:	0.02% FSO
Creep (1 hour):	0.05% FSO
Temp effect span:	20ppm/ $^{\circ}$ C of load
Temp effect zero:	40ppm/ $^{\circ}$ C of load
Compensated temp. range:	-10 $^{\circ}$ C to +40 $^{\circ}$ C
Safe load:	150% of capacity
Mechanical failure:	300% of capacity
Recommended excitation:	10VDC
Maximum excitation:	15VDC
Environmental protection:	IP67
Cable:	4 core with shield, 6 metre length
Input impedance:	800 Ω \pm 30 Ω
Output impedance:	700 Ω \pm 4 Ω
Material:	Alloy tool steel, nickel plated

Wiring colour code

Red: Excitation +
 Black: Excitation -
 Green: Signal +
 White: Signal -



To remove wheels for insertion of cable:

1. Remove nut, spring washer and spacer
2. Turn bolt with a spanner to loosen if necessary
3. Bolt should now push out allowing removal of wheel

All dimensions are in mm

Order code	Wire dia.	Wire force	A	B	C	D	E	F	Weight
PA6170/06-10/1T	6 - 10mm	0.4 - 3t	276	242	75	54	61	40	4.3kg
PA6170/11-16/4T	11 - 15mm	2 - 5t	276	242	75	54	61	40	4.3kg
PA6170/17-22/5T	16 - 22mm	4 - 10t	330	280	110	80	75	56	9.5kg

LOPA6170-1.4-0