

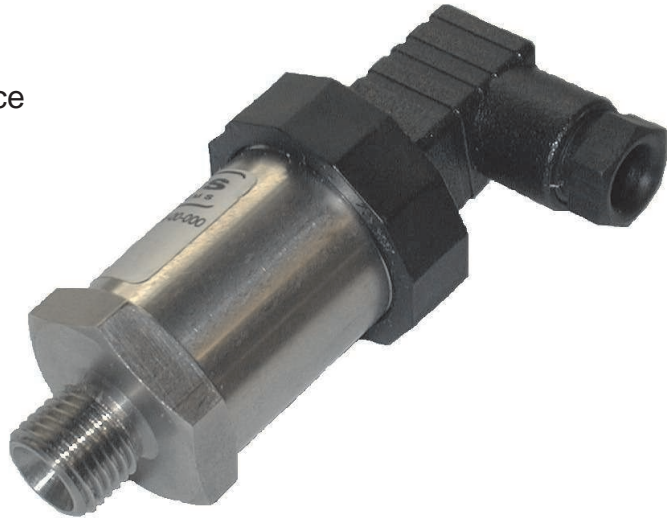
## Description

The IMPRESS range of industrial pressure transducers offers flexibility and cost effectiveness. The transducers offer good accuracy figures and temperature stability.

The use of ASIC based technology allows accuracies of a standard 0.25% with 0.1% available as an option

## Features:

- Superb chemical and corrosion resistance
- 4 to 20mA output
- Excellent linearity
- Wide temperature range
- Rugged construction
- High electrical isolation
- Excellent long term stability
- Temperature compensated
- Cost effective



## Specifications:

Pressure range:	0-0.3bar to 0-600 bar - Gauge or Absolute (Selected ranges in stock)
Non linearity, hysteresis. and repeatability (best line straight fit)	<±0.25% of span (standard)
Compensated temp:	20°C to 80°C
Operating temp range:	-20°C to 135°C
Thermal zero shift:	<±0.04% span/°C
Thermal span shift:	<±0.015% span/°C
Safe over range:	1½ times sensor range
Burst pressure:	3 times sensor range
Long term stability:	0.1% / 12 months

	<b>4-20 mA Output</b>	<b>mV/V Output</b>
Excitation:	10-32 Vdc unregulated	2-32VDC
Output span:	16mA ±1% of span at rated pressure	
Output zero:	4mA ±1% of span at zero pressure.	0mV ±1%

PRESIMPRESS-2.1-0

---

## AMALGAMATED INSTRUMENT CO PTY LTD

ACN: 001 589 439

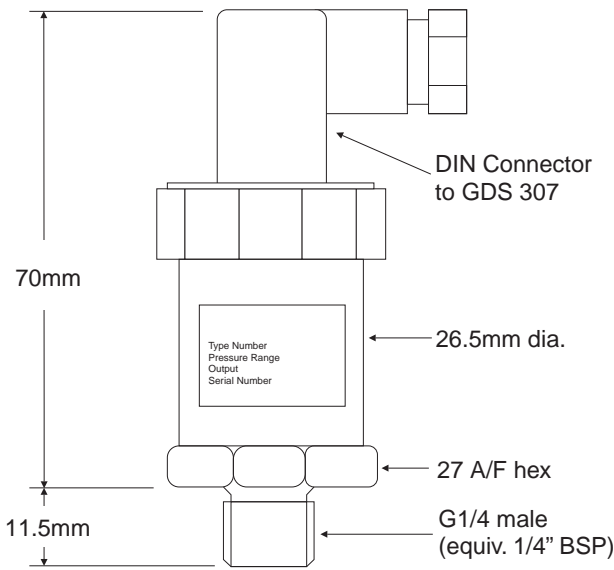
Unit 5, 28 Leighton Place Hornsby  
NSW 2077 AUSTRALIA

Telephone: +61 2 9476 2244  
Facsimile: +61 2 9476 2902

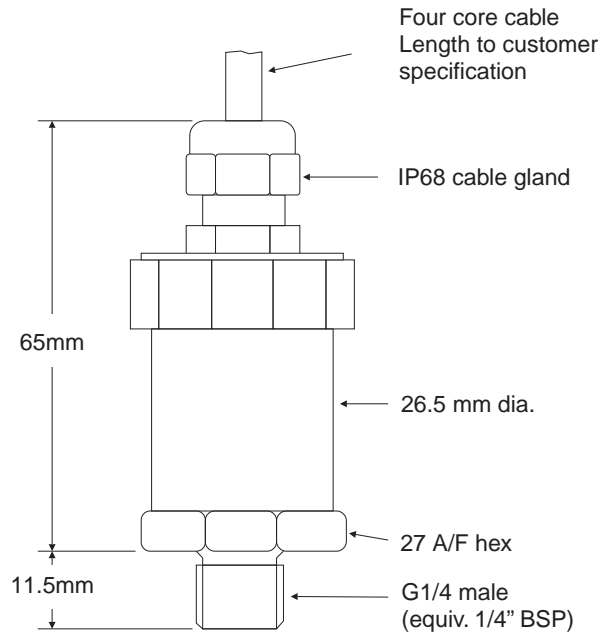
e-mail: sales@aicpl.com.au  
Internet: www.aicpl.com.au

# Dimensions and Connections

## GDS 307 DIN 43650 Plug & Socket



## IP68 Cable gland Assembly



## Connections & cable colour code

Output	Connections	Pin Number	Cable colour
4-20mA	+ve Supply	1	Red
	-ve Supply	2	Blue
	EARTH	EARTH	Yellow

Output	Connections	Pin Number	Cable colour
mV/V	Excitation +	1	Red
	Signal +	2	Green
	Excitation -	3	Blue
	Signal -	EARTH	Yellow

## Order Codes

4-20mA Output	
Range	Part Number
0 to 1 bar Absolute	IMP-A1000-5A4-AAV
0 to 0.3 bar G	IMP-G0300-5A4-AAV
0 to 0.5 bar G	IMP-G0500-5A4-AAV
0 to 1 bar G	IMP-G1000-5A4-AAV
0 to 2 bar G	IMP-G2000-5A4-AAV
0 to 4 bar G	IMP-G4000-5A4-AAV
0 to 5 bar G	IMP-G5000-5A4-AAV
0 to 10 bar G	IMP-G1002-5A4-AAV
0 to 20 bar G	IMP-G2002-5A4-AAV
0 to 50 bar G	IMP-G5002-5A4-AAV
0 to 100 bar G	IMP-G1003-5A4-AAV
0 to 200 bar G	IMP-G2003-5A4-AAV
0 to 400 bar G	IMP-G4003-5A4-AAV
0 to 600 bar G	IMP-G6003-5A4-AAV

mV/V Output	
Range	Part Number
0 to 1 bar Absolute	IMP-A1000-1A4-AAV
0 to 0.5 bar G	IMP-G0500-1A4-AAV
0 to 1 bar G	IMP-G1000-1A4-AAV
0 to 2 bar G	IMP-G2000-1A4-AAV
0 to 5 bar G	IMP-G5000-1A4-AAV
0 to 10 bar G	IMP-G1002-1A4-AAV
0 to 20 bar G	IMP-G2002-1A4-AAV
0 to 50 bar G	IMP-G5002-1A4-AAV
0 to 100 bar G	IMP-G1003-1A4-AAV
0 to 200 bar G	IMP-G2003-1A4-AAV
0 to 400 bar G	IMP-G4003-1A4-AAV
0 to 600 bar G	IMP-G6003-1A4-AAV